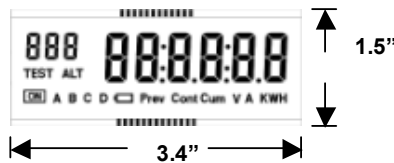




INTELLA 4, INTELLA 5



Time of Use (TOU) Metering Function

- User Programmable up to 4 TOU rates and 8 switching points for delivered KWh and KW demand.
- User programmable up to 4 seasons per year and each season can consist up to four daily TOU schedules.
- User programmable up to 5 TOU calendar years.
- User programmable up to 10 Non-recurring, 10 Floating and 20 Fixed holidays.
- The TOU calendar is capable of leap years and daylight saving time changes.

Self Read Metering Function

- User programmable monthly energy consumption and demand quantities self-read.
- Self-read will occur at the one o'clock of programmable day of each month.

Demand Metering Function

- User programmable of block demand intervals.
- User programmable with interval of 5, 10, 15, 30 and 60 minute.
- Instantaneous, Interval and Cumulative Demand.

Display Modes

- **Alternate Modes** : User programmable up to 30 items of register information or can be selected manually.
- **Normal Mode** : Meter will display scroll 6 different information, every 6 seconds continuously

Time (Hour: Minute: Second)
Date (Month: date: Year)
Current (A) and Voltage (V)
Previous and Present KWh

Liquid Crystal Display

- Six large digits for consumption, demand quantities and constants with up to four decimal points.
- Two digits of display identifiers.
- TOU Rates, Two digit Display Identifiers, Alternate mode,
- Magnitude and direction of KW loading. Previous, Continuous and Cumulative Demand
- Energy Flow indicator (Mechanical meter wheel simulators)
- 200A remote connect and disconnect switch state.

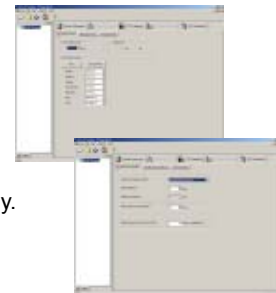
MeterMate Software

Rate Development Manager

- Windows 95/98/me/NT/2000 and XP.
- Security/User authorization management.
- Manage rate programs - Edit, Delete and Copy.
- Configure revenue and demand condition.
- Configure LCD display Items and parameters.
- Configure TOU conditions and rates.
- Configure remote communication condition.
- Create distributable rate program

Field and Report Manager

- Security/User Authorization.
- Load Rate program to INTELLA 4/5.
- Read current rate program of meter.
- Read revenue date from INTELLA 4/5.
- Report meter information.
- Numeric revenue and meter data display.
- Communication mode selection.
- Remote connect/disconnect



INTELLA 4/5 Specifications and Technical Data

- Voltage Ratings : 90VAC ~ 400VAC
- Frequency: 60Hz +/- 5%
- Current : 0 ~ 200A
- Temperature -40 ~ +85%
- Humidity: 0% to 95% non-condensing
- Accuracy: +/- 0.5%
- Power Consumption: Less than 2 W
- Internal Real Time Clock with Backup Battery

Options

- 56K PSTN Modem
- Home Energy Information Center
- Pre-Paid System
- Remote Connect/Disconnect

Standards

- ANSI C12.1 , American National Standard Code for Electricity Metering
- ANSI C12.10 , American National Standard for Electromechanical Watthour Meter
- ANSI C12.18 , Protocol Specification for ANSI TYPE 2 Optical Port
- ANSI C12.19 , Utility Industry End Device Data Tables
- ANSI C12.20, American National Standard for Electricity 0.5 Accuracy Classes
- ANSI C12.21, American National Standard Protocol Specification for Telephone Modem Communication
- ANSI C37.90.1 , IEEE Standard Surge Withstand Capability (SWC) Tests for Protective Relays and Relay Systems
- ANSI C62.41, IEEE Recommended Practice on Surge Voltages in Low-Voltage AC Power Circuits
- IEC 61000-4-4
- FCC Regulations, Part 15, Class "B"

Available in 2S, 12S, and 25S form factors with optional remote connect/disconnect switch.